

Christmas Markets & Winter Walking in The Cotswolds

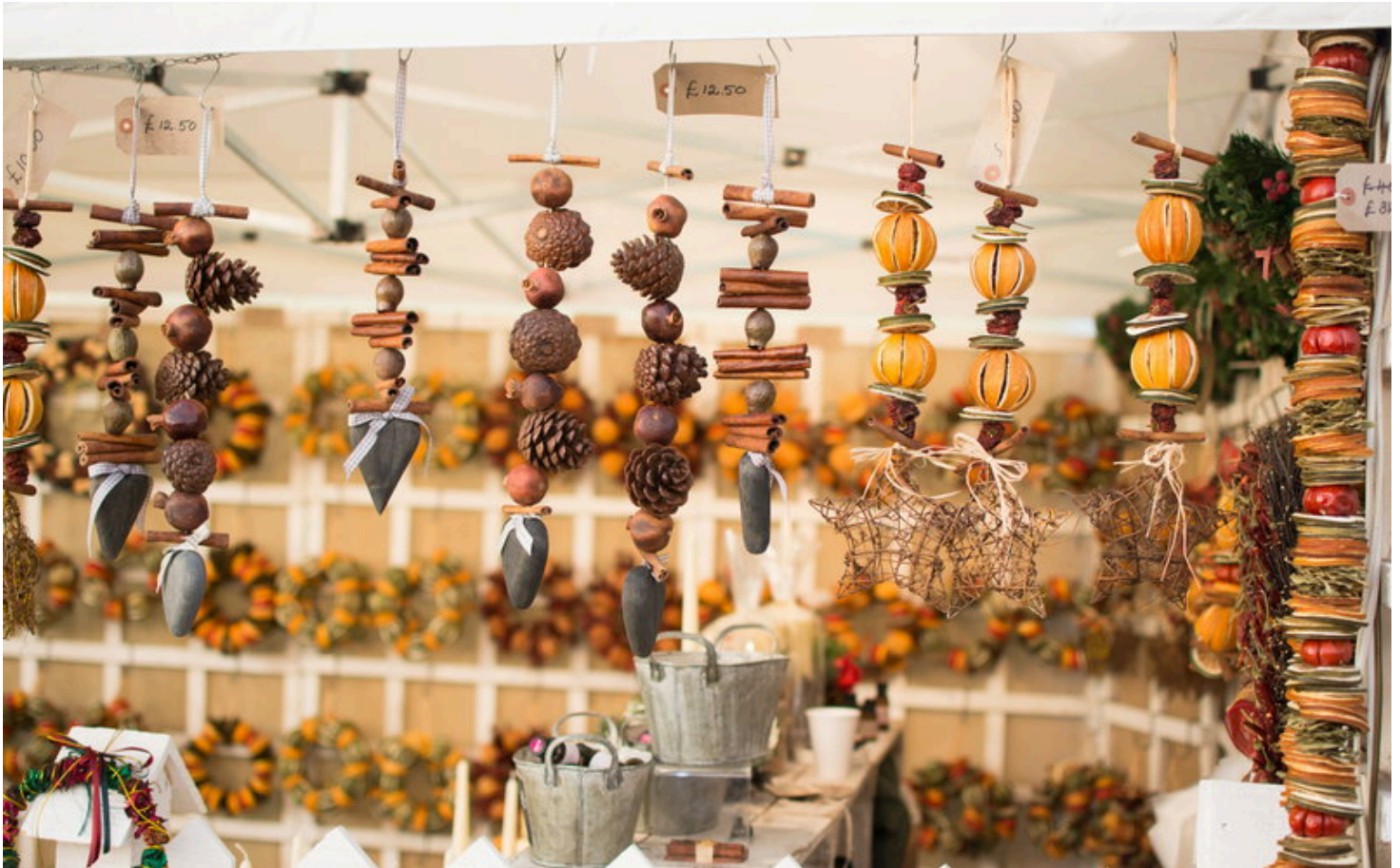
Trip style: Festive breaks

Destination: 📍 Cotswolds

Trip code: BTN03-CMX01

Grades: 1 & 2

Carbon Footprint: 🌳 91kg CO2



HOLIDAY OVERVIEW

Add an extra sprinkling of magic to your winter. Our Christmas Markets & Winter Walking breaks combine a choice of guided walks in the Cotswolds with visits to some of the best festive experiences in Britain.

WHAT YOU'LL LOVE

- Exploring the winter landscapes of the Cotswolds on foot
- A choice of guided walks with our experienced HF Holidays Leaders
- Admiring Blenheim Palace in its full festive splendour
- Browsing for all sorts of goodies at the Christmas market
- Staying at Harrington House, our country house in the Cotswolds

WHAT'S INCLUDED

- Entry to Blenheim Palace
- Comfortable en-suite accommodation in our country house
- Cream tea on arrival day
- Cooked or continental breakfast every morning
- Daily packed lunches
- Three-course evening meals, plus tea & coffee
- Guided walking with experienced HF Holidays Leaders
- Choice of up to three guided walks (on walking days)
- All transport to and from walks where necessary
- Easy-to-follow routes, maps, and information in our Discovery Point if you want to explore independently

ITINERARY

Day 1: Arrival Day

Check-in at the hotel is available from 16:00. If you are a member you can arrive at the house from 14:00. Enjoy a complimentary cream tea at 16:30 and meet other guests.

Day 2: Christmas at Blenheim Palace

Spend the day visiting Blenheim Palace and its Christmas market. The lavish rooms and halls of this UNESCO-listed manor house will be transformed into a festive fantasyland. Expect Christmas shopping, carol singers, yuletide treats to try, and this grand stately home decorated in its festive best.

Day 3: Around the Slaughters

Day 4: Departure Day

Enjoy a leisurely breakfast before making your way home.

Harrington House

You get the best of all worlds at this Grade II-listed retreat just a skip away from the heart of Bourton-on-the-Water – the impossibly pretty Cotswolds town with chocolate-box cottages, old-fashioned tearooms, and low-arched stone bridges that span the River Windrush. Not only will you be within walking distance of the Cotswold Motoring Museum, the Model Village, and Birdland Wildlife Park & Gardens, but it's an easy drive from village beauties Broadway and Bibury. For walkers and hikers, there's no shortage of thrills, especially for those keen to explore the well-trodden trails and paths around the Windrush Valley, Lower and Upper Slaughter, Gloucestershire Way, Cotswold Way, and Monarch Way.

A warm welcome

We want you to feel comfortable from the moment you arrive. You'll find a welcome pack in your room with guest registration forms, menus, order forms for dinners and picnic lunches, the Wi-Fi password, and the front door code. Our houses are locked at night, so we recommend noting the Duty Manager's number on arrival in case of an emergency (or getting locked out).

Evening entertainment

While evening entertainment varies from house to house, HF Holidays Inter-House Quiz night held after dinner on Wednesdays is a weekly staple. Your HF Holidays leader may be around for tips on guided and self-guided walking routes as well as visit-worthy local attractions.

Walks talks

Our HF Holidays walk leaders host guided walking information briefings before dinner on guided walking holiday arrival days. This is followed by a group Walks Talk for information on the following day's guided walks (held before dinner every evening). Self-guided walking guests are, of course, welcome.

The walking day

Prior to setting off on guided walks, your HF Holidays Leader will run you through a short safety briefing. There's also an up-to-date weather forecast on display at the house to ensure you have appropriate clothing and footwear. If you choose to do your own walks or are on a self-guided walking holiday, we ask that you please complete an Independent Walker Card each day. These can be found near the Discovery Point in the house.